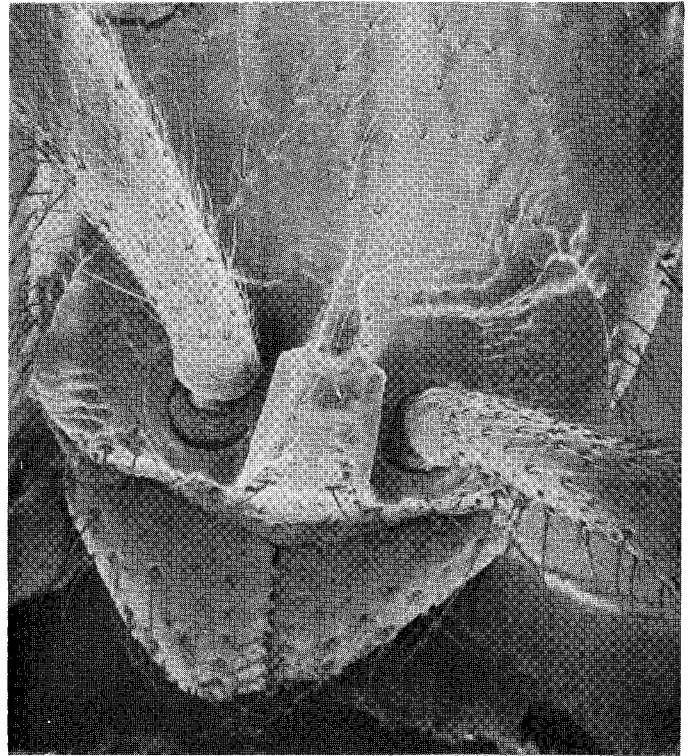
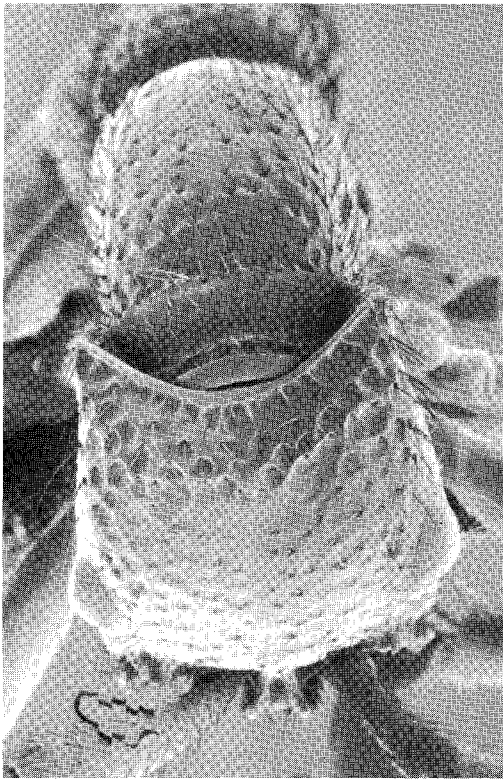


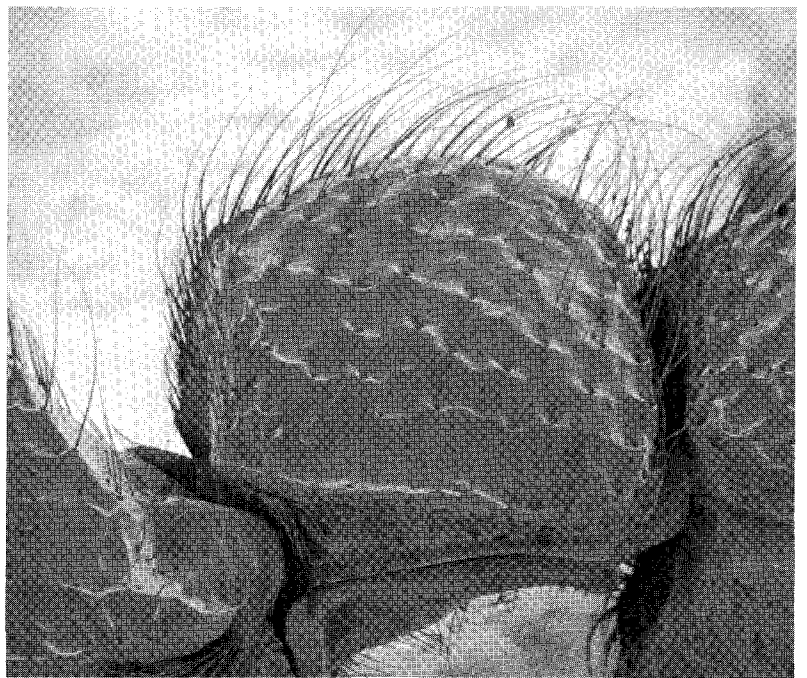
66. Dorsal view of head, tilted slightly forward, $\times 58$.



67. Anterior part of head in nearly full-face view, $\times 110$.

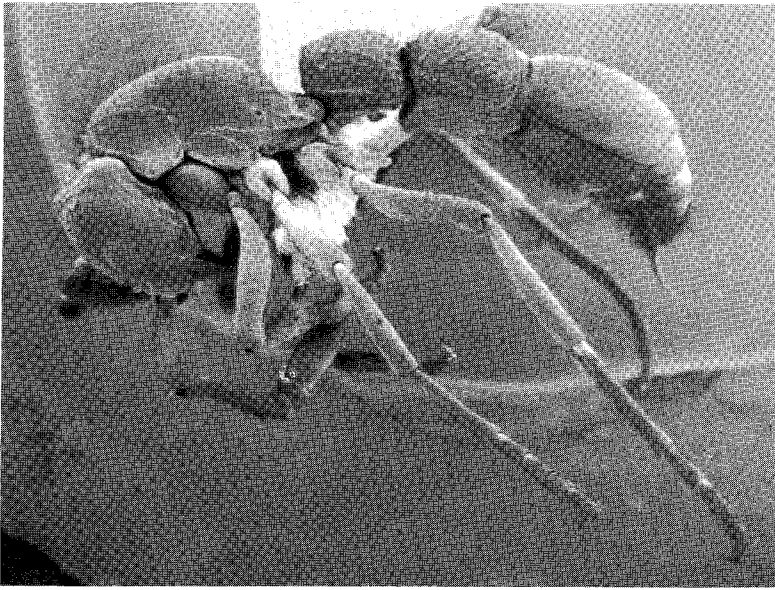


68. Dorsal view of head, tilted sharply forward, and oblique view of dorsal surface of trunk, $\times 58$.

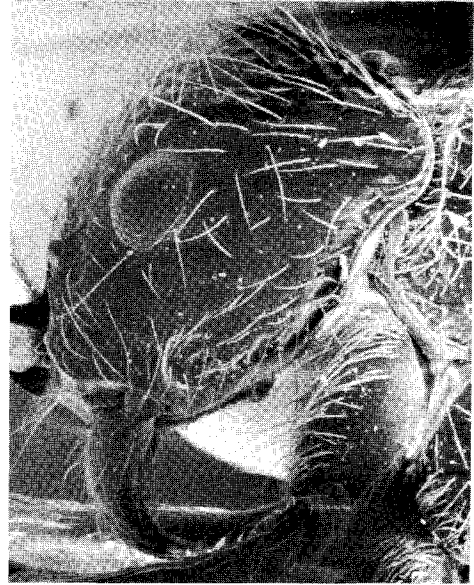


69. Side view of petiole and adjacent structures, $\times 92$.

Figures 66–69. Cerapachys centurio n. sp., paratype worker from Zaire.



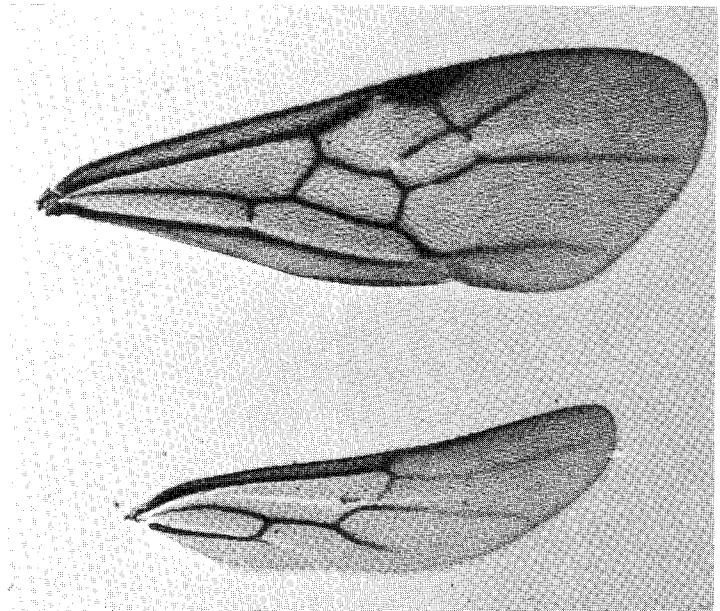
70. *C. centurio* n. sp., side view of paratype, $\times 20$.



71. *C. centurio* n. sp., side view, head of paratype, $\times 58$.



72. *C. indicus* n. sp. paratype, detail of a piligerous foveola, $\times 125$.



73. Wings of *Acanthostichus* sp. male, S. Brasil, $\times 18$.

Figures 70-74. *Cerapachys* spp. workers and *Acanthostichus* sp. male.



74. *C. kodecorum* n. sp., propodeum, petiole, and postpetiole in side view, $\times 49$.